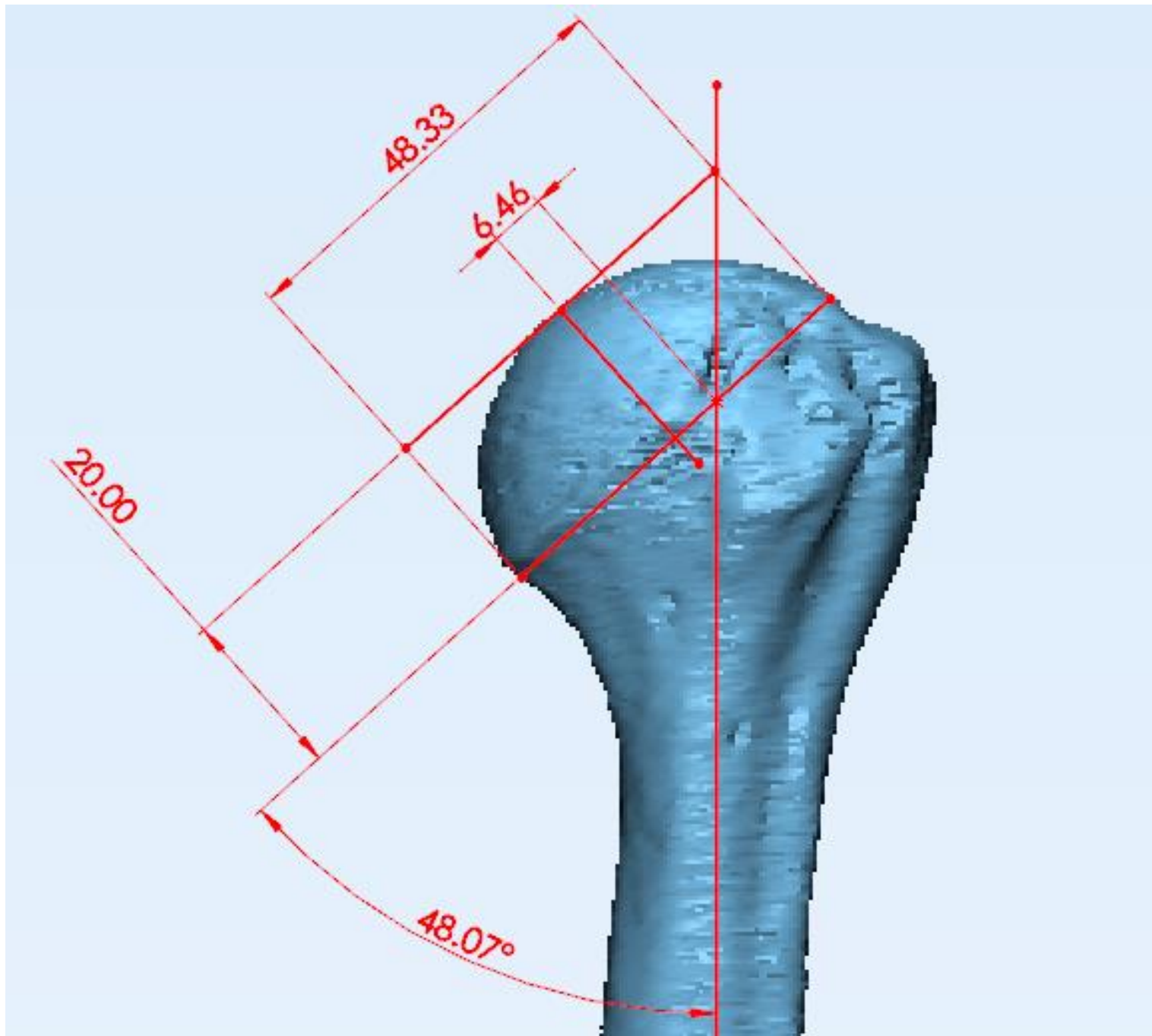


**PREOPERATIVE PLANNING  
FOR TOTAL SHOULDER ARTHROPLASTY**

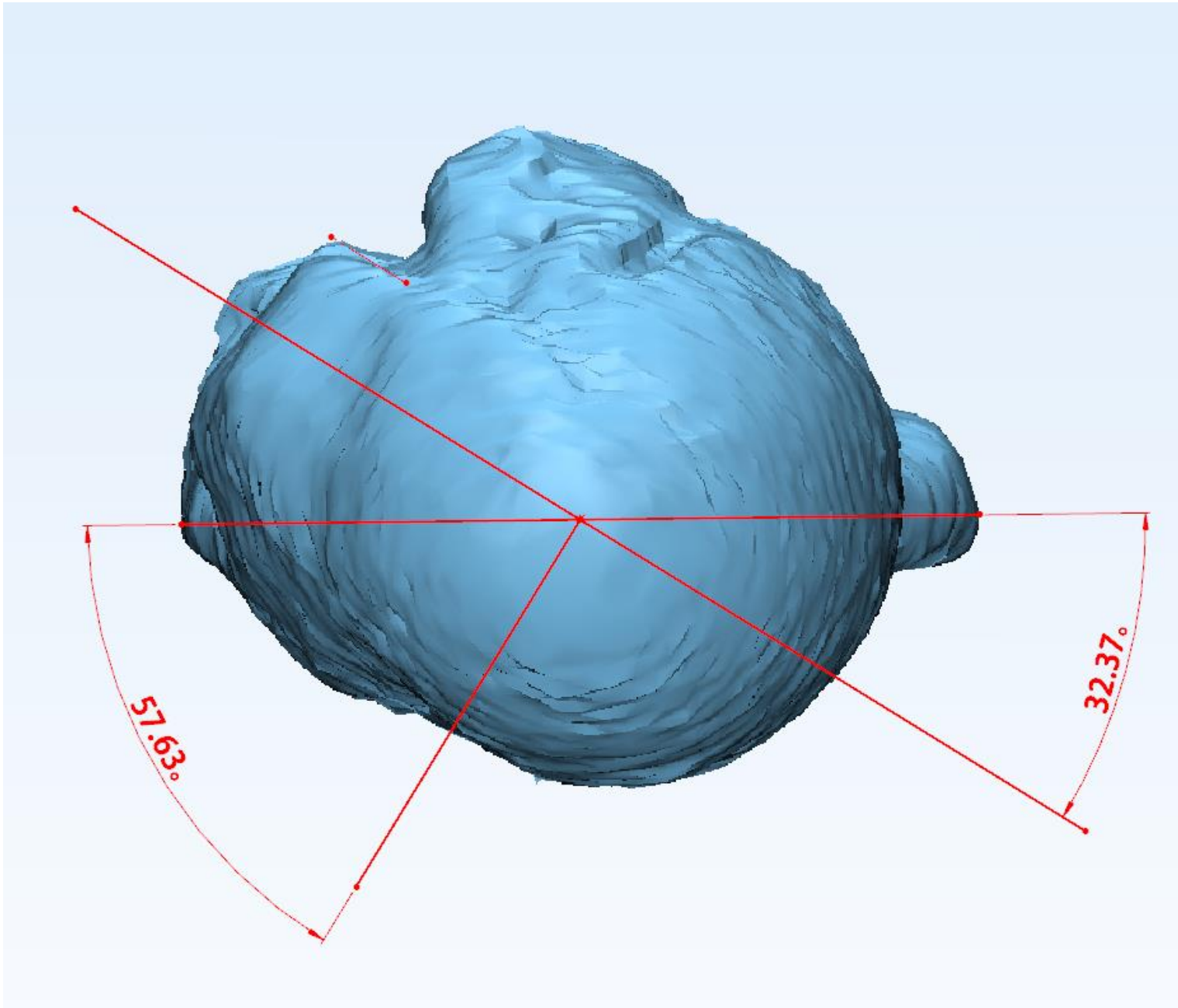
## Left Side Measurements

Parameters	Value
1- Head width	45.04
2- Head height	18.26
3- Retroversion angle	37.89°
4- Valgus angle	46.21°
5- Shaft center offset	2.93
6- Head center	9.17
7- Shaft width @ 10 cm	11.43
8- Glenoid length	36.73
9- Glenoid width	29.29
10- Cancellous Bags	42.80
11- Glenoid version angle	86.89°
12- Gleno-humeral offset	27.47

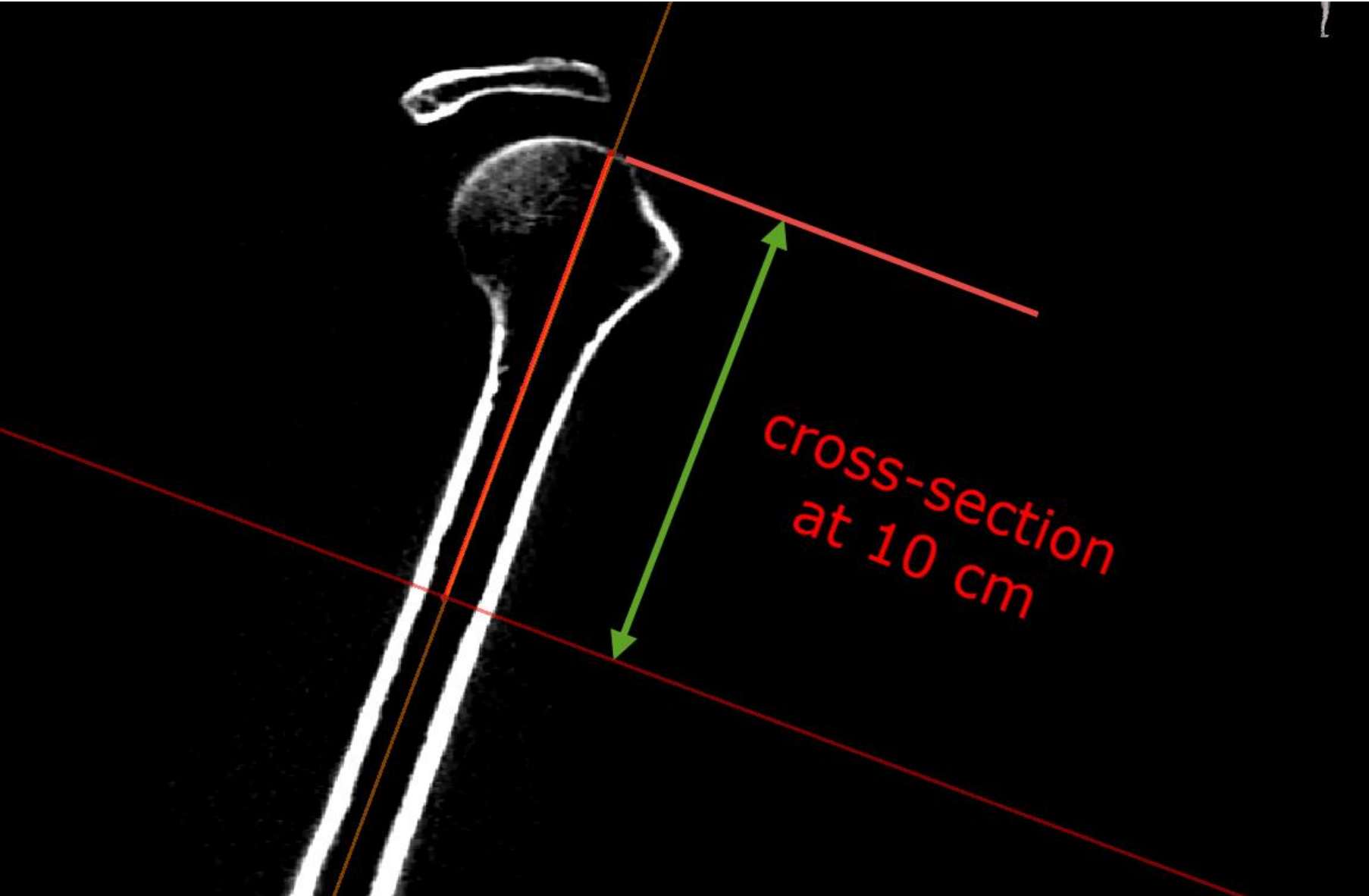


**Head height, width and  
Valgus angle**

# Humeral Anteversion

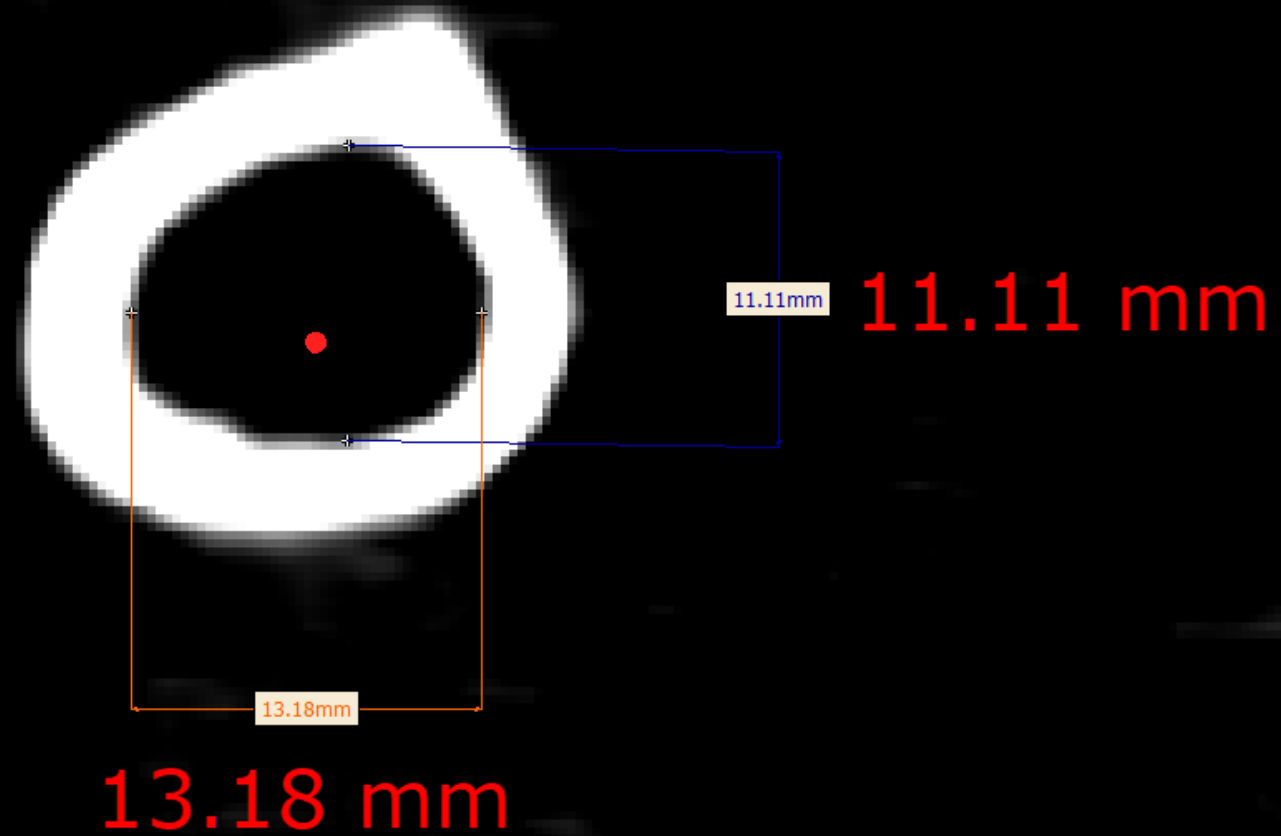


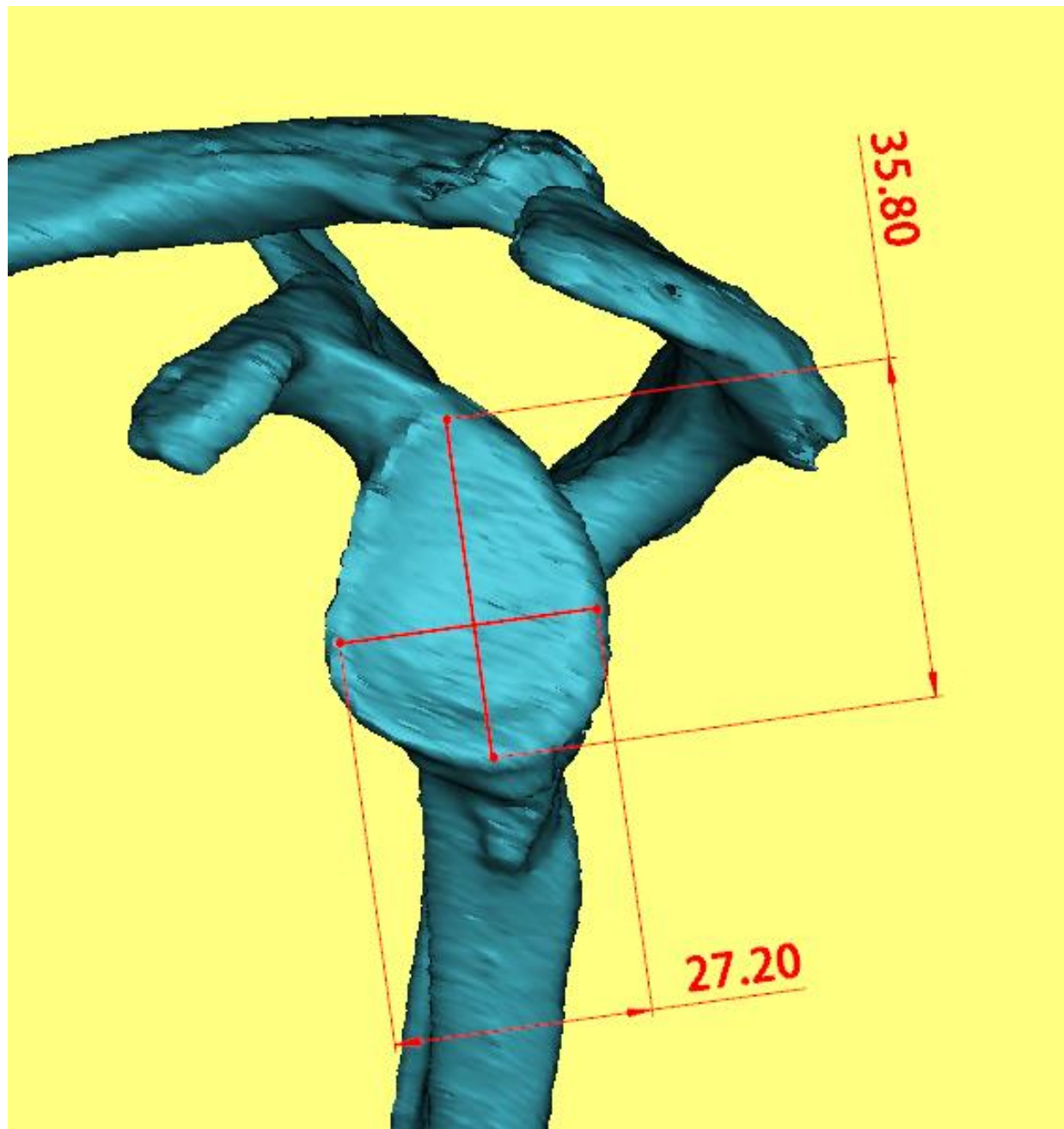
# Shaft Width @ 10 cm



# Shaft Width @ 10 cm

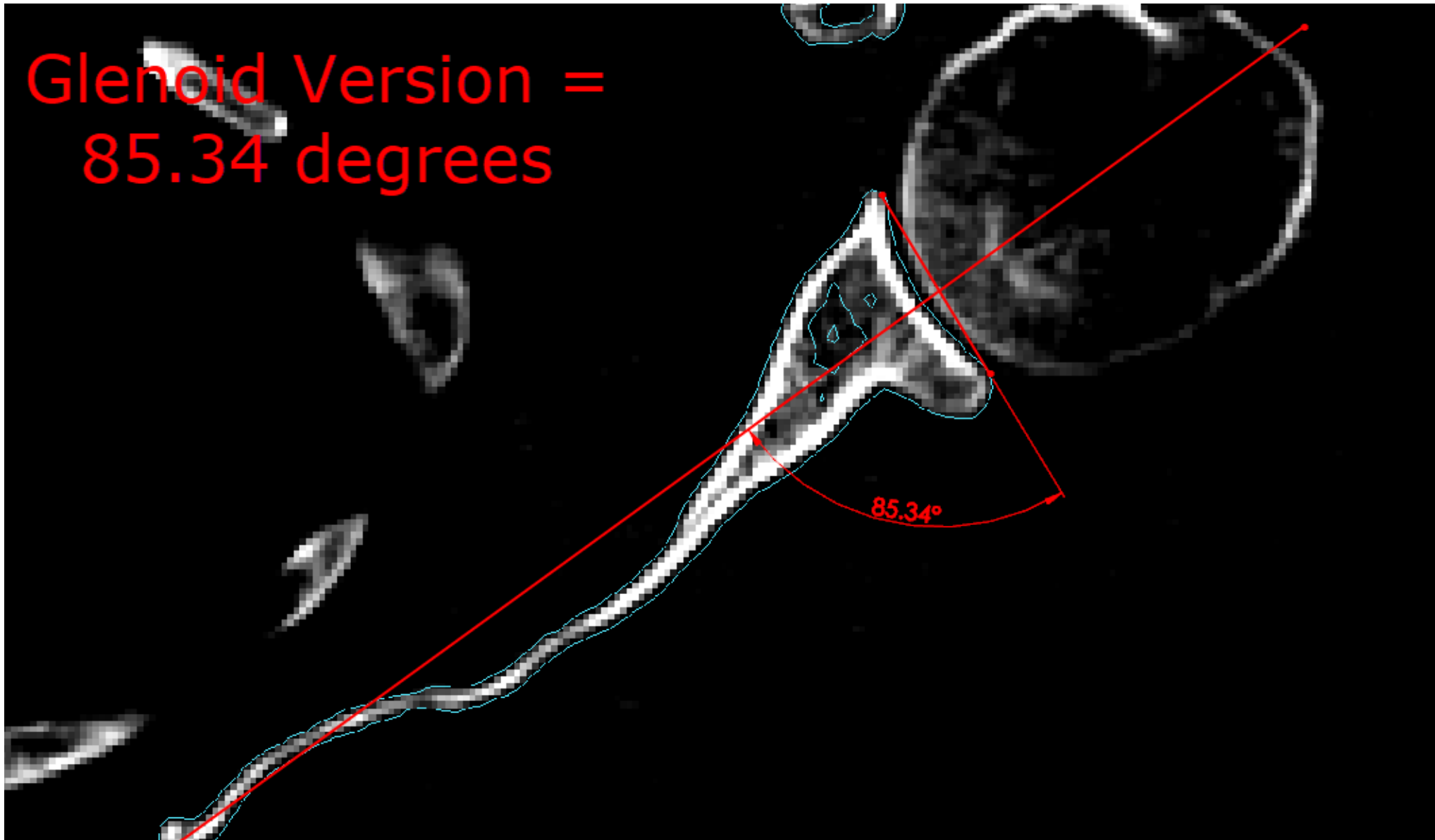
Average Shaft Width  
= 12.15 mm





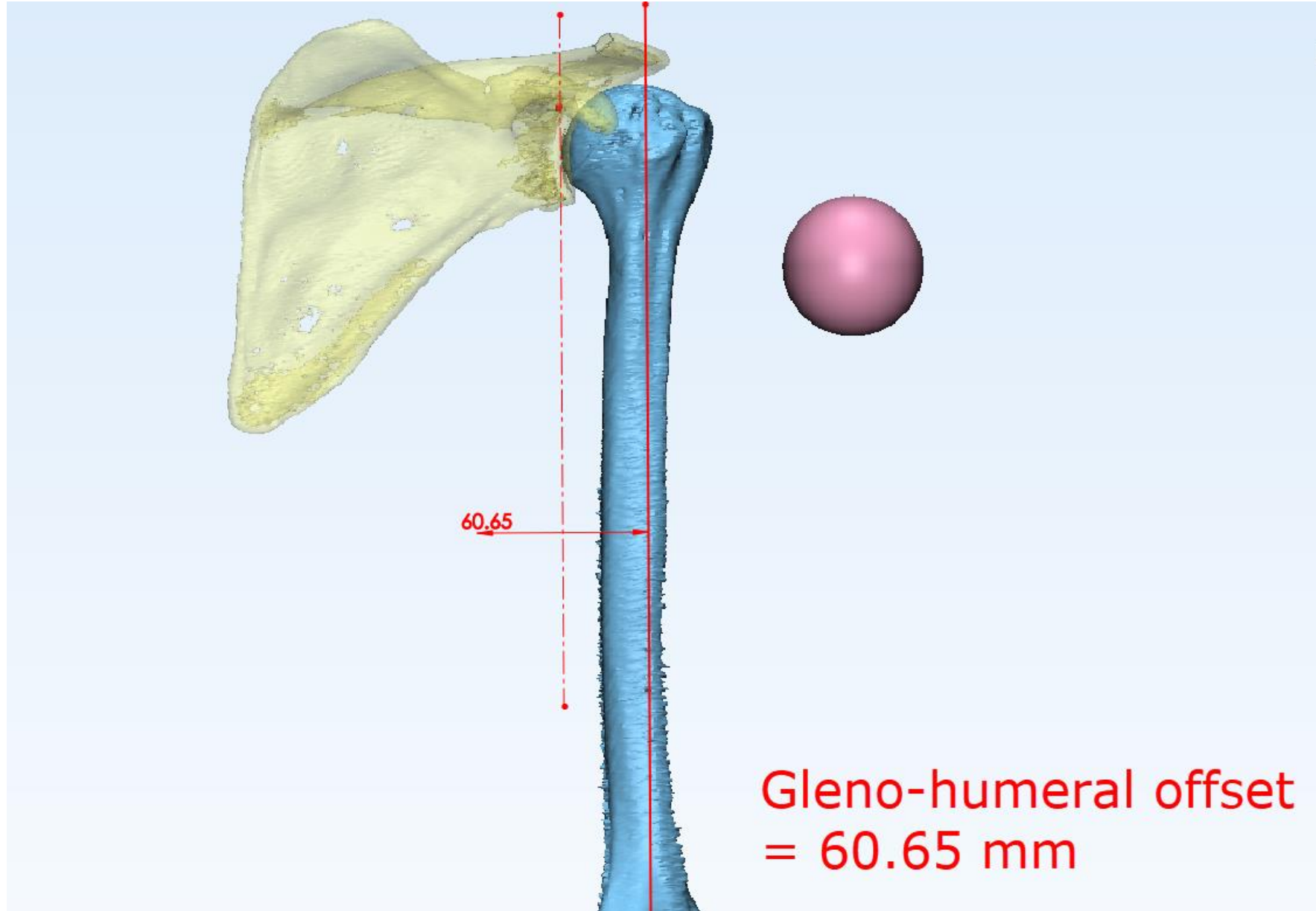
# Glenoid Version Angle

Glenoid Version =  
85.34 degrees





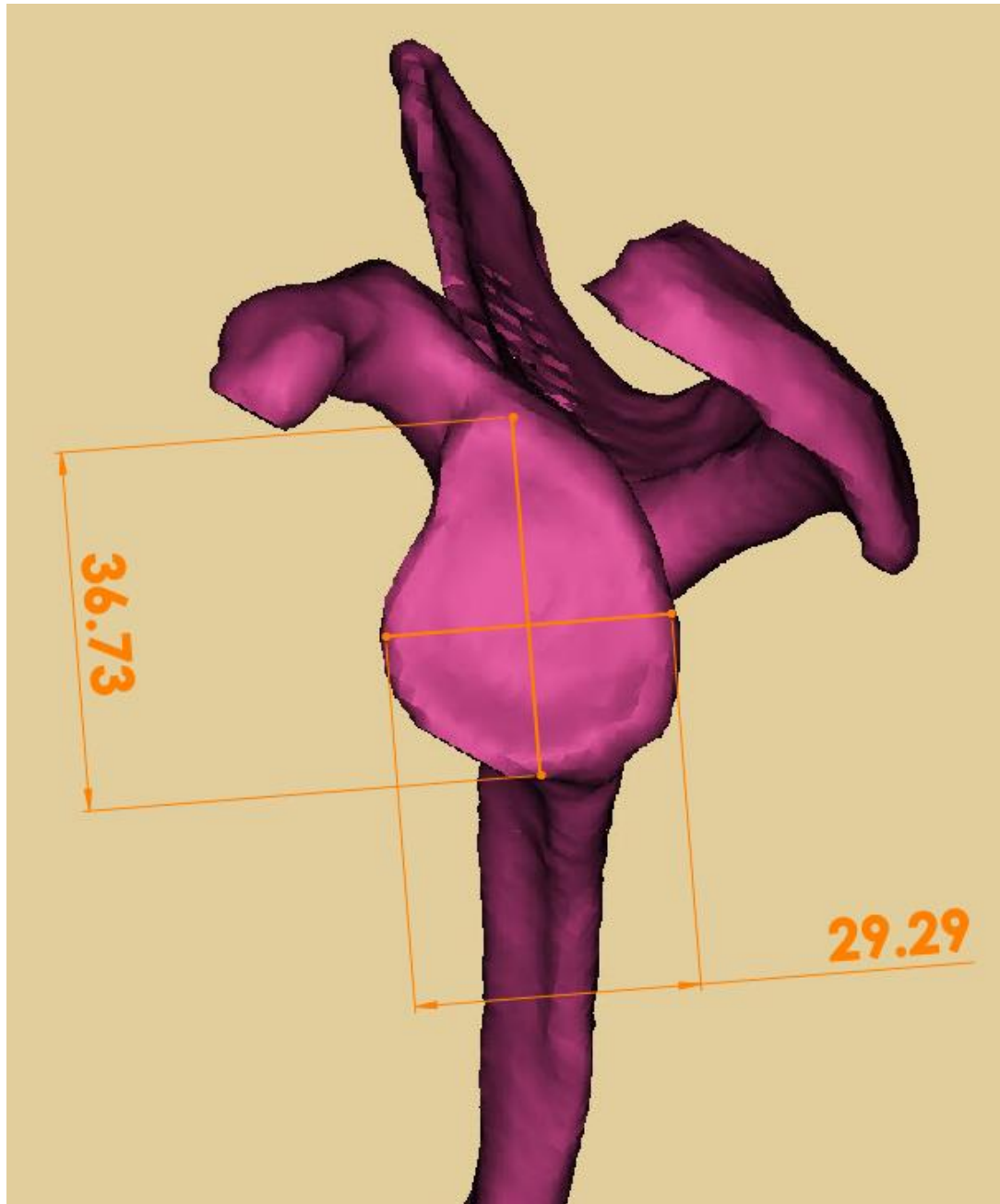
# Gleno-humeral Offset



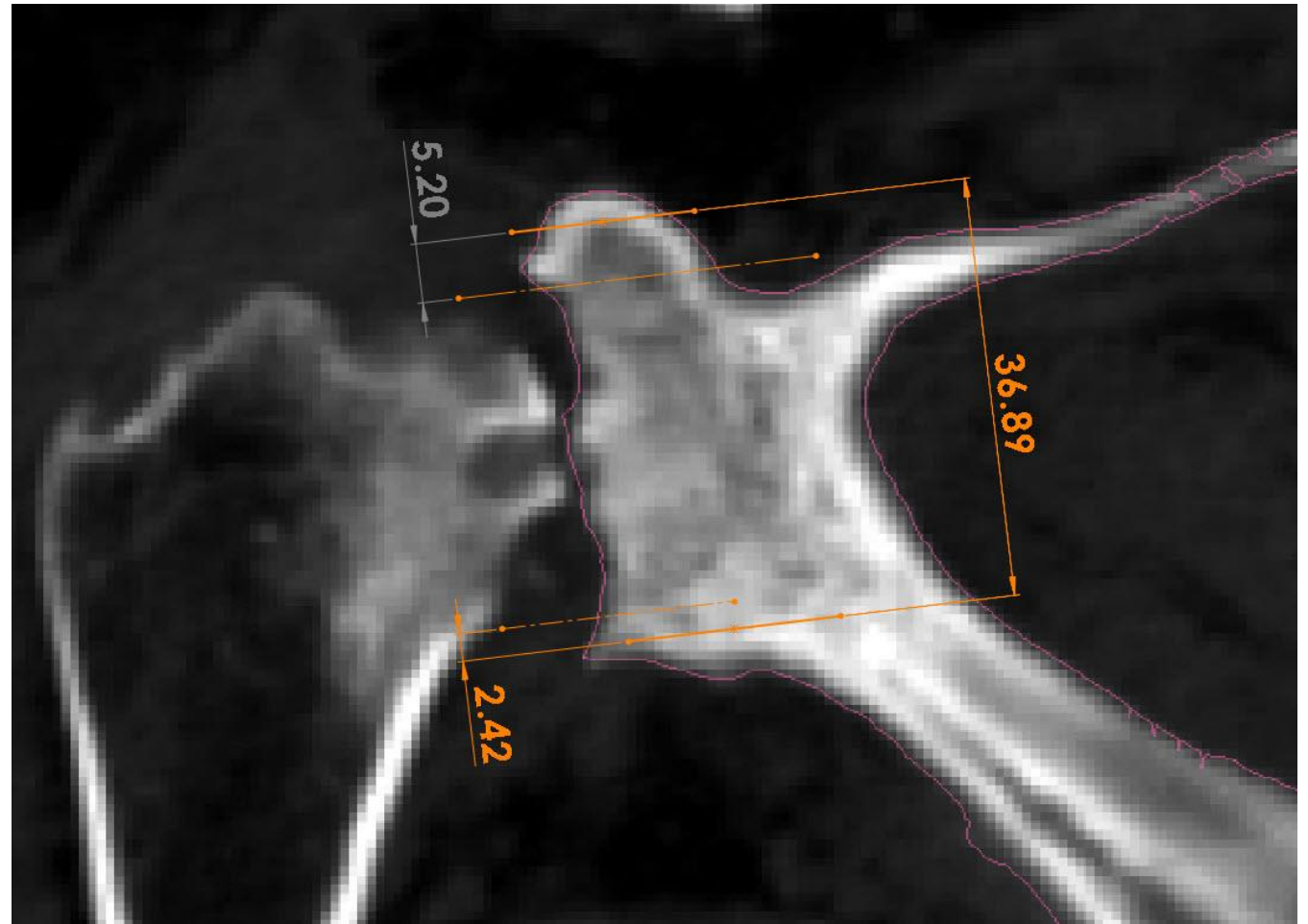
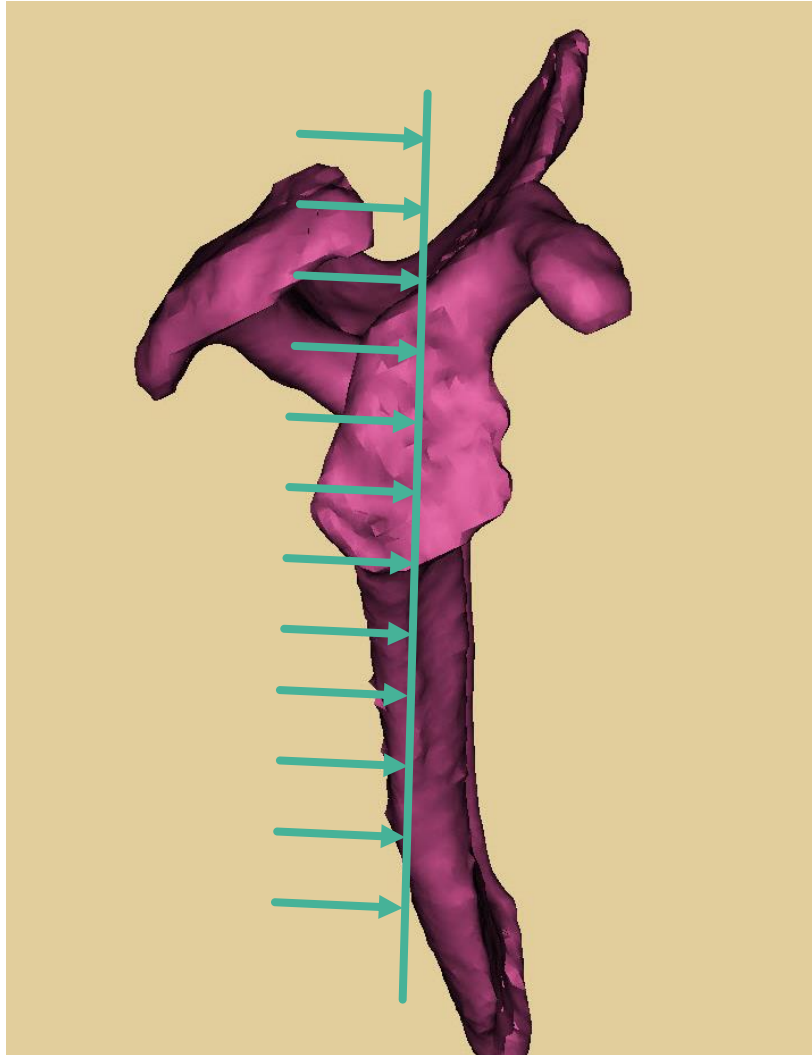
# 3D RECONSTRUCTION OF THE GLENOID (GLENOID LENGTH AND WIDTH)



# 3D RECONSTRUCTION OF THE GLENOID (GLENOID LENGTH AND WIDTH)



# 3D RECONSTRUCTION OF THE GLENOID (CANCELLOUS POCKETS)



## 2D MEASUREMENTS OF THE GLENOID (GLENOID VERSION)

